

QUICK START GUIDE

UR10RWF Enroller



A un click de distancia ...

1.- Product Summary

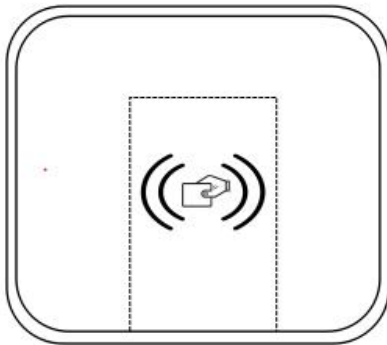
UR10RW-F are ultra high frequency, readable and writable card emitters that can read and write data for the user area and EPC area of UHF labels.

Combined with UHF contactless radio frequency circuitry and various encoding and decoding algorithms, this card issuer can read and write the tags and cards that support the global EPC UHF Class1 Gen 2 and ISO 18000-6C standard. Its USB interface adopts advanced plug and play interface without driver core technology to connect computers and other equipment.

The card issuer control chip is provided with a watchdog and voltage detection circuit, and has the advantage of stable reading performance.

2.- General Information

Front View



Enroller

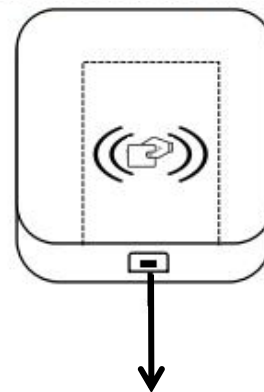
Work Frequency:

902MHz-928Mhz

Reading Range:

20 ~ 40CM

Bottom view and interface



Mini USB port

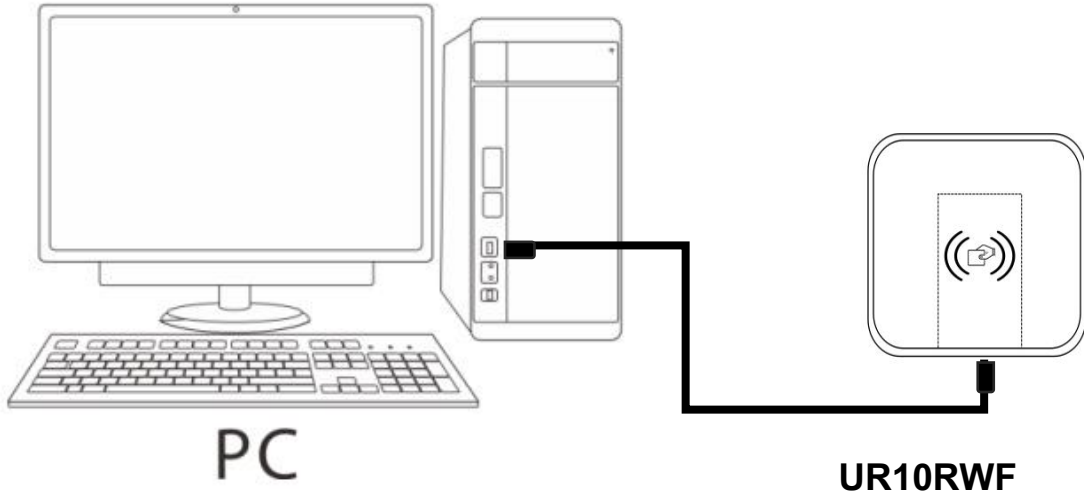
3.- Technical Data

Model	UR10RWF
Supported cards	UHF Tags, UHF Cards
Work Frequency	902MHz-928Mhz
Letura distance	20 ~ 40CM valid distance (determined by environment and labels)
Protocol	Global EPC UHF Class1 Gen 2, ISO 18000-6C USB
Communication interface	analog keyboard output
Support Operation	Compatible with US standard UHF reader
Work Voltage	DC 5V (± 4%)
Work Current	50 ~ 300mA
Work temperature	- 10 ° C ~ + 50 ° C

4.- Safety Precautions

The operating voltage of the enroller is 5V, it is recommended to use a mini USB cable and take the voltage from the USB port of the PC.

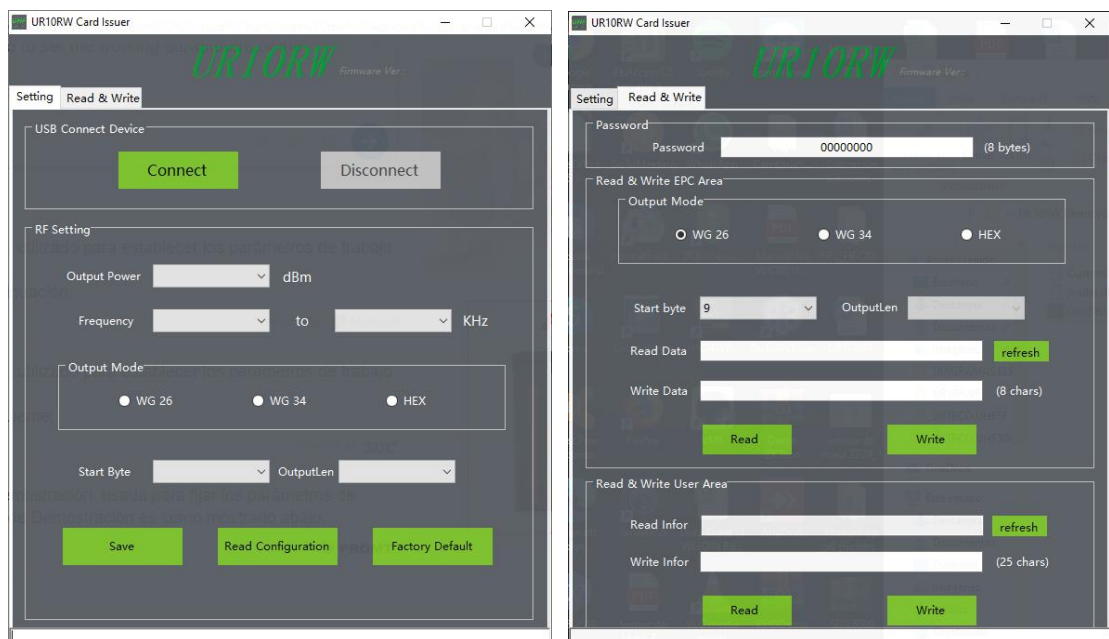
5.- Modification of the configuration via Demo



Introduction to Software

Our company offers Demo, which is used to configure the work parameters of the enroller.

The demo interface is as shown below:



The default reader settings are as follows:

Output power	26 dBm
Frequency	902MHz-928Mhz
Communication interface	Wiegand 26

Demo with instructions

Connect the USB port of the reader to the USB port of the computer.

- To play the demo on the computer, click "Connect", the right side of the middle will show "Connected successfully".
- **RF configuration:** Set the RF parameters of the machine, including power and spectrum.
- **Output power:** The power range is 10 ~ 33 dBm.
- **Frequency:** They allow their use in multiple applications and systems. Available for Global Frequencies 902MHz-928Mhz.
- **Output Mode:** The default Wiegand format is WG26 and can be configured as WG34 and Hex.
- **Start Byte:** The EPC tag has 12-byte data, the first default 3 or 4-byte data, if you set a byte offset value, the output data will start from the set value.

Reading and writing

The module is used to read and write the EPC card number.

Read & Write EPC Area: To read and write data from the EPC area.

Read & Write EPC User Area: To read and write EPC user data.

ZK Building, Wuhe Road, Gangtou, Bantian, Buji Town, Longgang

District, Shenzhen China 518129

Tel: +86 755-89602345 Fax: +86 755-89602394

www.zkteco.com