

Alarm wiring guide 3000i

1 Applicable products

This manual is applicable to these products:

FLEXIDOME IP turret 3000i IR:

- NTV-3502-F02L
- NTV-3502-F03L
- NTV-3503-F02L
- NTV-3503-F03L
- NTV-3502-F02L-P
- NTV-3502-F03L-P
- NTV-3503-F02L-P
- NTV-3503-F02L-P

FLEXIDOME IP micro 3000i:

- NDV-3502-F02
- NDV-3502-F03
- NDV-3503-F02
- NDV-3503-F03
- NDV-3502-F02-P
- NDV-3502-F03-P
- NDV-3503-F02-P
- NDV-3503-F03-P

FLEXIDOME IP 3000i IR:

- NDE-3502-AL
- NDE-3503-AL
- NDE-3502-AL-P
- NDE-3503-AL-P

DINION IP 3000i IR:

- NBE-3502-AL
- NBE-3503-AL
- NBE-3502-AL-P
- NBE-3503-AL-P

FLEXIDOME IP micro 3000i - outdoor:

- NDE-3502-F02
- NDE-3502-F03
- NDE-3503-F02
- NDE-3503-F03
- NDE-3502-F02-P
- NDE-3502-F03-P
- NDE-3503-F02-P
- NDE-3503-F03-P

FLEXIDOME IP turret 3000i IR - outdoor:

- NTE-3502-F02L
- NTE-3502-F03L
- NTE-3503-F02L
- NTE-3503-F03L
- NTE-3502-F02L-P
- NTE-3502-F03L-P
- NTE-3503-F02L-P
- NTE-3503-F03L-P

2 Alarm wiring diagram

This document details a specific layout of alarm wiring inputs and outputs.

I/O (Input/Output) ports

The input/output ports provide the following:

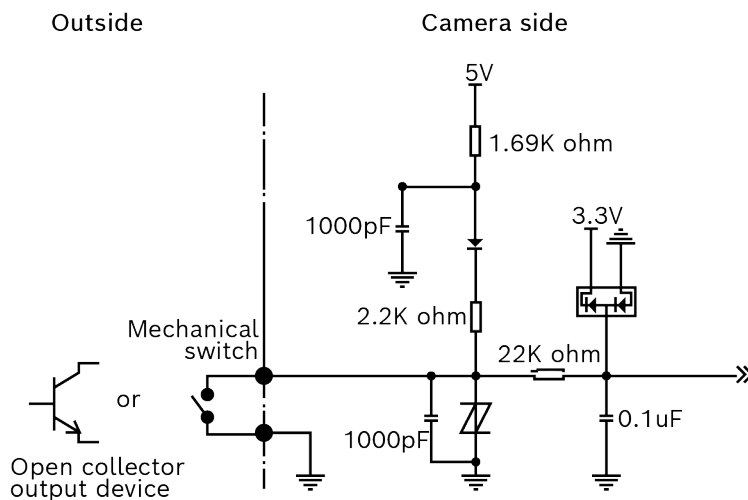
- alarm input/output
- audio input/output

The pin assignment for the audio I/O and the alarm I/O is the following:

Pin number	Signal
1	Alarm output
2	GND
3	Alarm input
4	GND
5	Audio input
6	Audio output

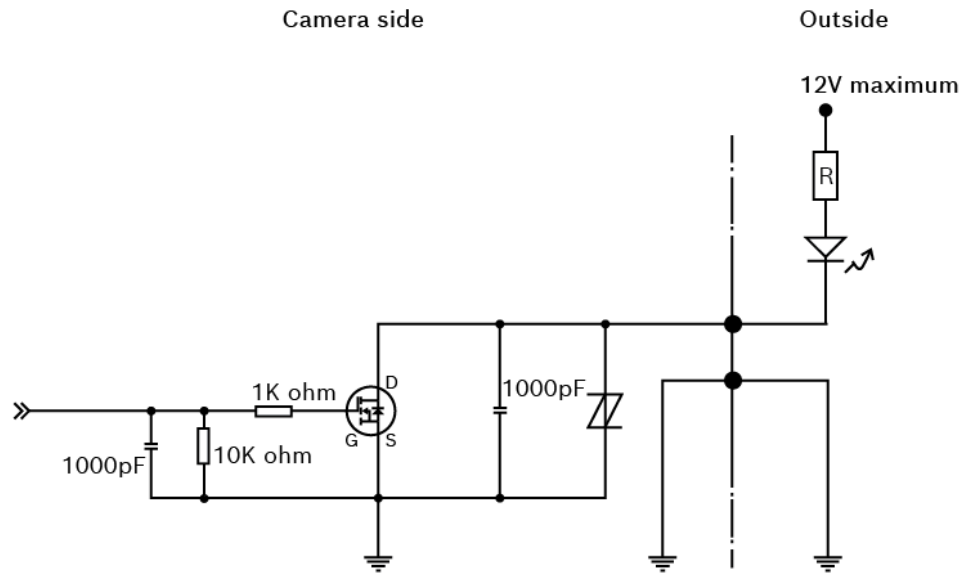
Wiring diagram for alarm input

The following diagram demonstrates how the device triggers alarm input through the external mechanical switch or through the external open collector circuit.



Wiring diagram for alarm output

The following diagram demonstrates an example of how the device can provide the alarm output function. This alarm output function outputs a connection to ground for external devices.



Bosch Security Systems B.V.

Torenallee 49

5617 BA Eindhoven

Netherlands

www.boschsecurity.com

© Bosch Security Systems B.V., 2022

Building solutions for a better life.

202201121628