

Package content



UniFi Switch



Rack mount brackets (qty: 2)



Bracket Screws (Qty: 8)



Set Screws (Qty: 4)



Cage Nuts (Qty: 4)



Power cord

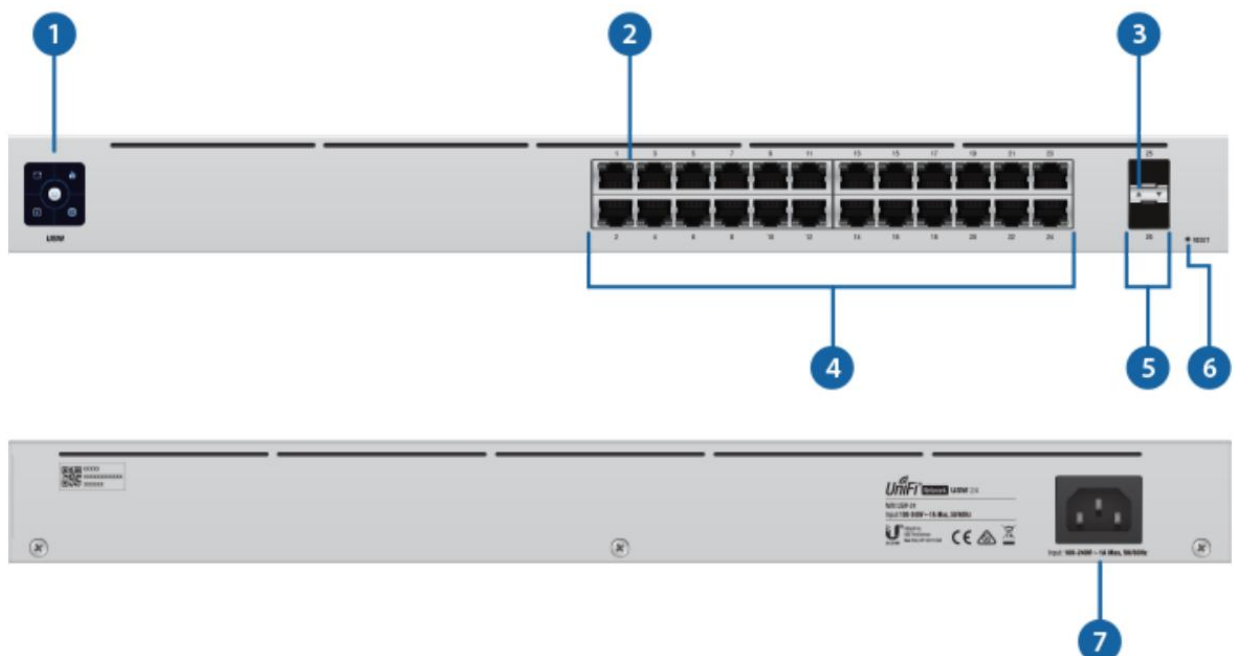
System Requirements

- Linux, Mac OS X or Microsoft Windows 7/8/10
- Java Runtime Environment 1.6 (1.8 or later is recommended)
- Web browser: Google Chrome (other browsers may have limited functionality).
- UniFi Controller Software v5.12.x or later, available at: ui.com/download/unifi



IMPORTANT: We strongly recommend using power regulation and supporting an uninterruptible power supply to prevent equipment damage due to local AC power stability issues.

Device overview



startup animation	Starting.
fixed white light	Factory defaults, pending approval.
steady blue light	Network approval successful and correct operation.
location animation	This indicates you have clicked Locate in the UniFi controller software. The software will also show the location of the device on the map.
2 RJ45 Speed/Link/Activity LED (Ports 1 - 24)	
disabled	not connected
Amber	Link established at 10/100 Mbps Blinking indicates activity
Green	Link established at 1000 Mbps Blinking indicates activity
3 SFP Link/Activity LED (Ports 25 - 26)	
disabled	not connected
Green	Link established at 1 Gbps Blinking indicates activity
4 RJ45 (ports 1 - 24)	
RJ45 ports support 10/100/1000 Ethernet connections.	
5 SFP (ports 25 - 26)	
The SFP ports are hot-swappable and support 1 Gbps connections.	
6 Reset button	
This button has two functions on the UniFi Switch:	
<ul style="list-style-type: none"> • Reset – Quickly press and release the Reset button. • Restore Factory Default Settings: Press and hold the Reset button for more than five seconds. 	
7 power port	
Connect the included power cord to the power port.	

installation requirements

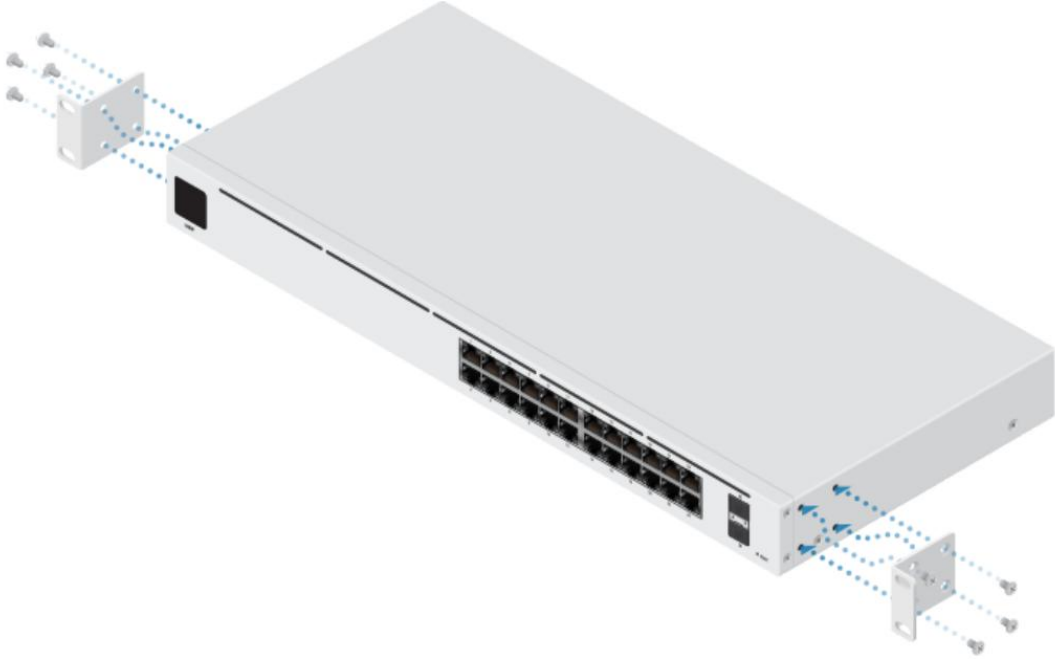
- Phillips screwdriver
- Standard size, 19" rack width with a minimum 1U height For indoor applications, use Category
- 5 (or higher) UTP cabling certified for indoor use.
- For outdoor applications, Category 5 (or higher) shielded cabling must be used for all Ethernet connections and must be connected to the AC ground of the power supply.



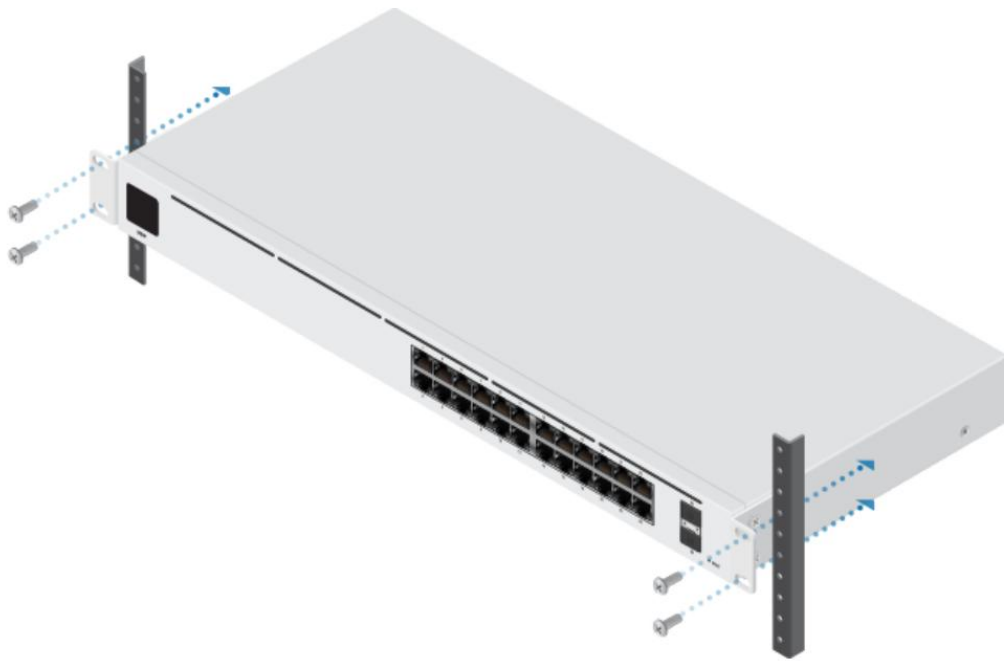
Note: Although the wiring can be run outside, the UniFi Switch must be stored inside a protective case.

Device installation

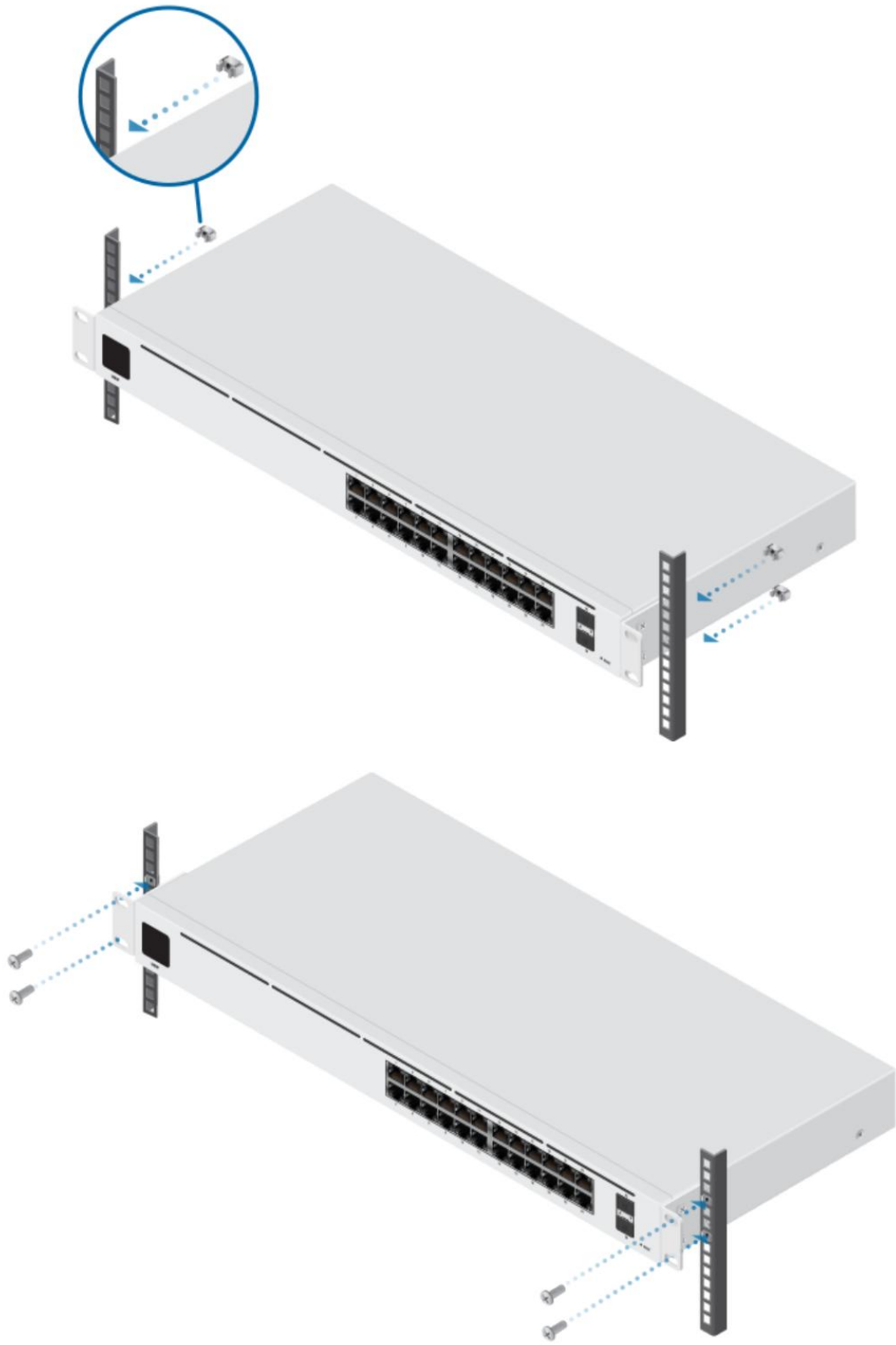
1.



2.



○



Power connection

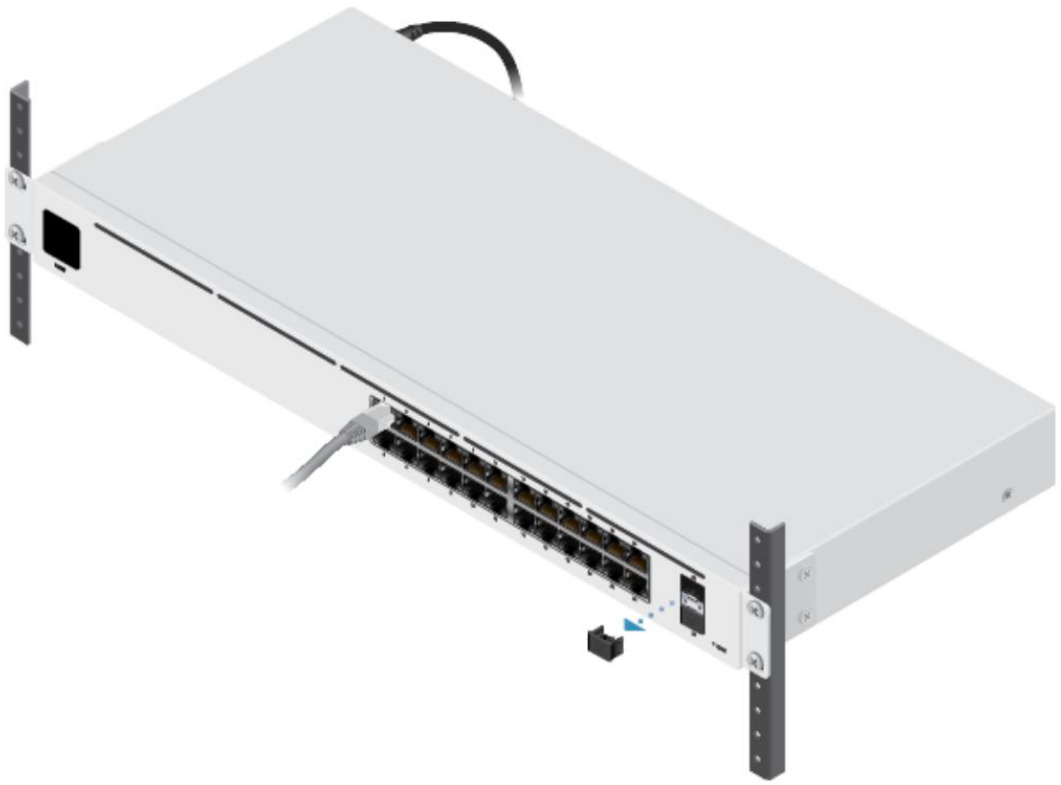


ethernet connection



SFP connection

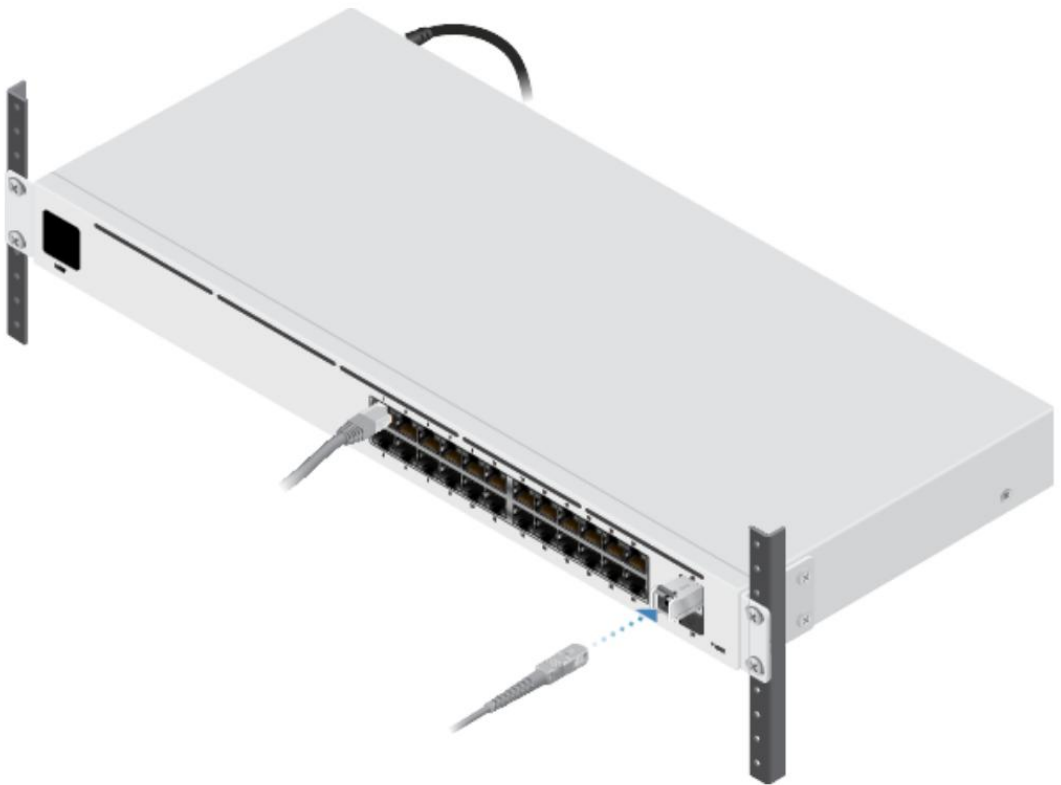
1.



2.



3.



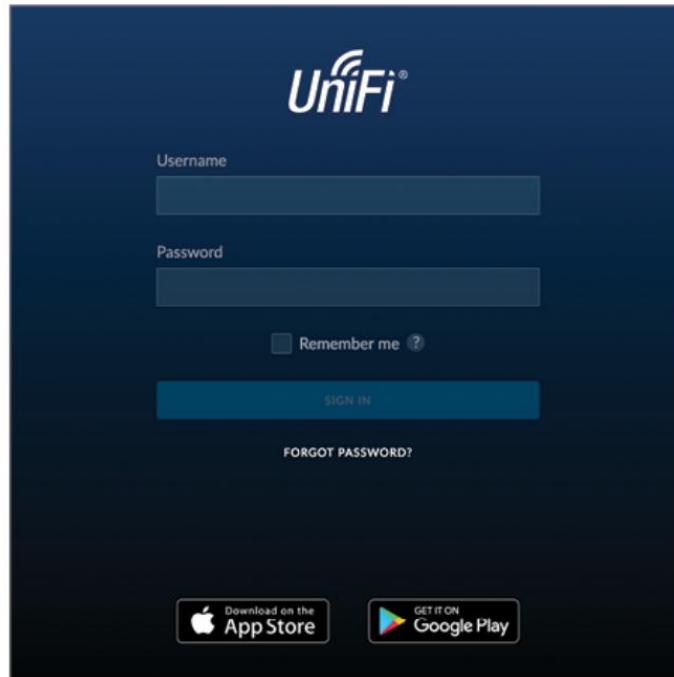
Software installation

Download and install the latest version of the UniFi driver software at ui.com/download/unifi and follow the instructions on the screen.



Note: If you already have UniFi driver version 5.12.x or later installed, go to the ["UniFi Switch Deployment" section](#).

Once you have installed the software and run the UniFi Setup Wizard, a login screen for the UniFi Controller management interface will appear. Enter the administrator name and password you created and click Sign In.



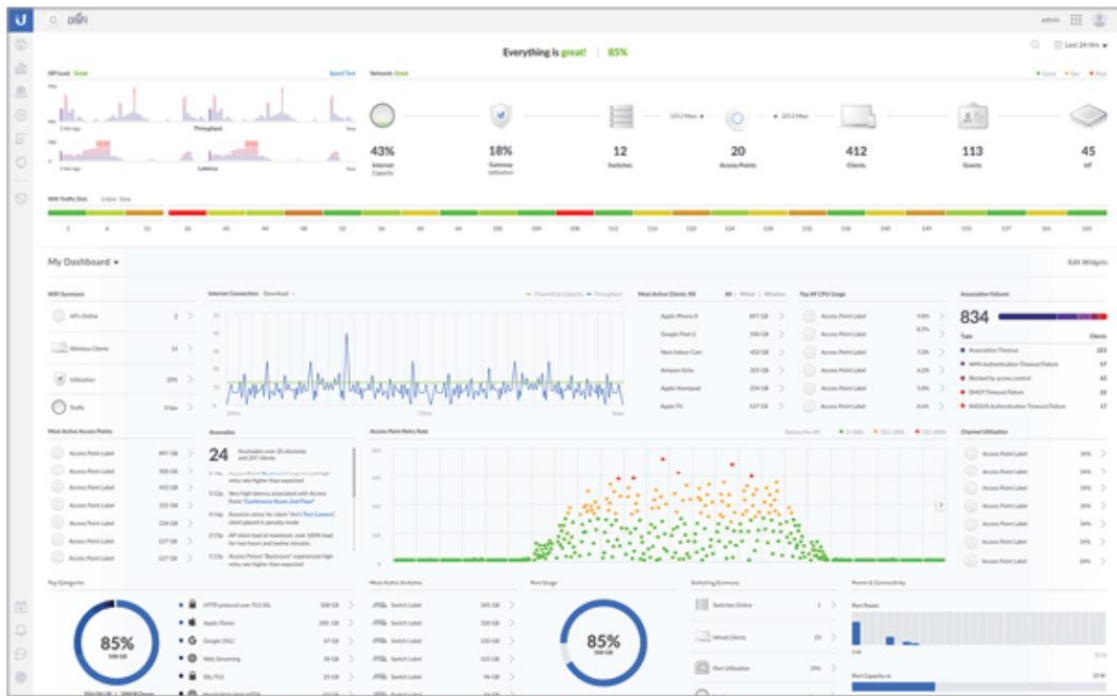
You can manage your wireless network and view network statistics through the UniFi Controller's management interface.

To deploy the UniFi Switch, go to ["UniFi Switch Deployment"](#).

For information on setting up and using the UniFi Controller software, see the user guide located on our website: ui.com/download/unifi

Implementation of the UniFi switch

1. From the UniFi controller panel, click Devices on the left menu bar.



- On the Devices screen, locate the UniFi Switch in the list of devices in the Model column. To approve the UniFi Switch, click Adopt.

The screenshot shows the 'Devices' screen in the UniFi Network Controller. It features a search bar at the top right and a filter bar at the top left with tabs for 'All (11)', 'Gateway/Switches (8)', and 'APs (3)'. The main content is a table with the following columns: Device Name, IP Address, Status, Model, Version, and Uptime. The table lists several devices, including a UniFi Security Gateway 4P and several UniFi Switch models. The last device, 'Rcscda77069f', is in a 'PENDING ADOPTION' status.

DEVICE NAME	IP ADDRESS	STATUS	MODEL	VERSION	UPTIME
USG	10.2.50.21	CONNECTED	UniFi Security Gateway 4P	4.4.18.5052172	73d 17h 52m 34s
US-6NG	192.168.1.155	CONNECTED (1000 FDX)	UniFi Switch XG 6POE	4.0.5.9550	55m 40s
US-XG	192.168.1.35	CONNECTED (1000 FDX)	UniFi Switch 16XG	4.0.1.9421	11d 3h 57m 49s
US16P-150W	192.168.1.176	CONNECTED	UniFi Switch 16 POE-150W	4.0.5.9550	54m 32s
US8P-150W	192.168.1.31	CONNECTED	UniFi Switch 8 POE-150W	4.0.1.9421	35d 22h 16m 38s
US8P-150W	192.168.1.248	CONNECTED	UniFi Switch 8 POE-150W	4.0.5.9550	56m 14s
US8P-60W	192.168.1.45	CONNECTED	UniFi Switch 8 POE-60W	4.0.5.9550	12m 47s
Rcscda77069f	192.168.1.152	PENDING ADOPTION	UniFi Switch 24	4.0.5.9550	1h 27m 16s

- The screen turns blue to confirm that the UniFi Switch has been deployed successfully.

specs

ETC-24	
Dimensions	442,4 x 200 x 43,7 mm (17,42 x 7,87 x 1,72")
Weight	2,70 kg (5,95 lb)
With rack mounting brackets	2,79 kg (6,15 lb)
Interfaces	
Red	24 x 10/100/1000 RJ45 ports 2 x 1G SFP Ethernet ports
Management	Ethernet and bandwidth
feeding method	100-240 V AC, 50/60 Hz, universal input
Power supply	CA/CC, interno, 36 W
Supported voltage range	From 100 to 240 V AC

maximum power consumption	25W
Luces LED RJ45 data port SFP data port	Speed/link/activity Link/Activity
ESD/EMP protection	Air: ± 16 kV, contact: ± 12 kV
Shocks and vibrations	ETSI300-019-1/4 standard
Operating temperature	-5 to 45° C (23° F to 113° F)
operating humidity	10 to 90% non-condensing
Certifications	CE, FCC, IC

Safety notices

1. Read, follow and save these instructions.
2. Pay attention to all warnings.
3. Use only attachments / accessories specified by the manufacturer.



WARNING: Failure to provide adequate ventilation may cause a fire hazard. Leave at least 20mm of free space next to the ventilation holes for proper airflow.



WARNING: To reduce the risk of fire or electric shock, do not expose this product to rain or moisture.



WARNING: Do not use this product in a place that can be submerged in water.



WARNING: Avoid using this product during a lightning storm. There may be a remote risk of electric shock from lightning.

electrical safety information

1. Compliance is required with respect to the voltage, frequency, and current requirements indicated on the manufacturer's label. Connection to a power source other than those specified may result in malfunction, damage the equipment, or present a fire hazard if limitations are not followed.
2. There are no operator serviceable parts inside this equipment. Service should only be provided by a qualified service technician.
3. This equipment is provided with a detachable power cord having an integral safety ground wire intended for connection to a safety grounded receptacle.
 - a. Do not substitute the power cord with one other than the approved type supplied. Never use an adapter plug to connect to a 2-wire outlet, as this will break the continuity of the ground wire.
 - b. The equipment requires the use of the ground wire as part of the safety certification, modification or misuse can create a risk of electric shock which can result in serious injury or death.
 - c. Contact a qualified electrician or the manufacturer if you have questions about the installation before connecting the equipment.
 - d. Protective ground connection is provided by a listed AC adapter. The building installation must provide adequate backup protection against short circuits. and. Protective ground connection is provided by a listed AC adapter. The building installation must provide adequate backup protection against short circuits.

limited warranty

ui.com/support/warranty The

limited warranty requires the use of arbitration to resolve disputes on an individual basis and, where appropriate, specifying arbitration instead of jury trials or class actions.

Compliance

Changes or modifications not expressly approved by the party responsible for compliance could void the user's authority to operate the equipment.
This device complies with Part 15 of the FCC Rules. Operation is subject to the following two conditions.

1. This device may not cause harmful interference, and 2. This device must accept any interference received, including interference that may cause undesired operation.

This equipment has been tested and found to comply with the limits for a Class A digital device, pursuant to Part 15 of the FCC Rules. These limits are designed to provide reasonable protection against harmful interference when the equipment is operated in a commercial environment. This equipment generates, uses, and can radiate radio frequency energy and, if not installed and used in accordance with the instruction manual, may cause harmful interference to radio communications. Operation of this equipment in a residential area is likely to cause harmful interference in which case the user will be required to correct the interference at his own expense.

ISED Canada

CAN ICES-3(A)/NMB-3(A)

Australia and New Zealand



Warning: This equipment complies with Class A of CISPR 32. In a residential environment, this equipment may cause radio interference.

CE Marking

The CE marking on this product indicates that the product complies with all directives that apply to it.



[WEEE Compliance Statement](#)

[Declaration of conformity](#)

online resources

