

## Package content



UniFi Switch



Rack mount brackets  
(qty: 2)



Screw Clamps (Qty: 8)



Set Screws (Qty: 4)



Cage Nuts (Qty: 4)



Power cord



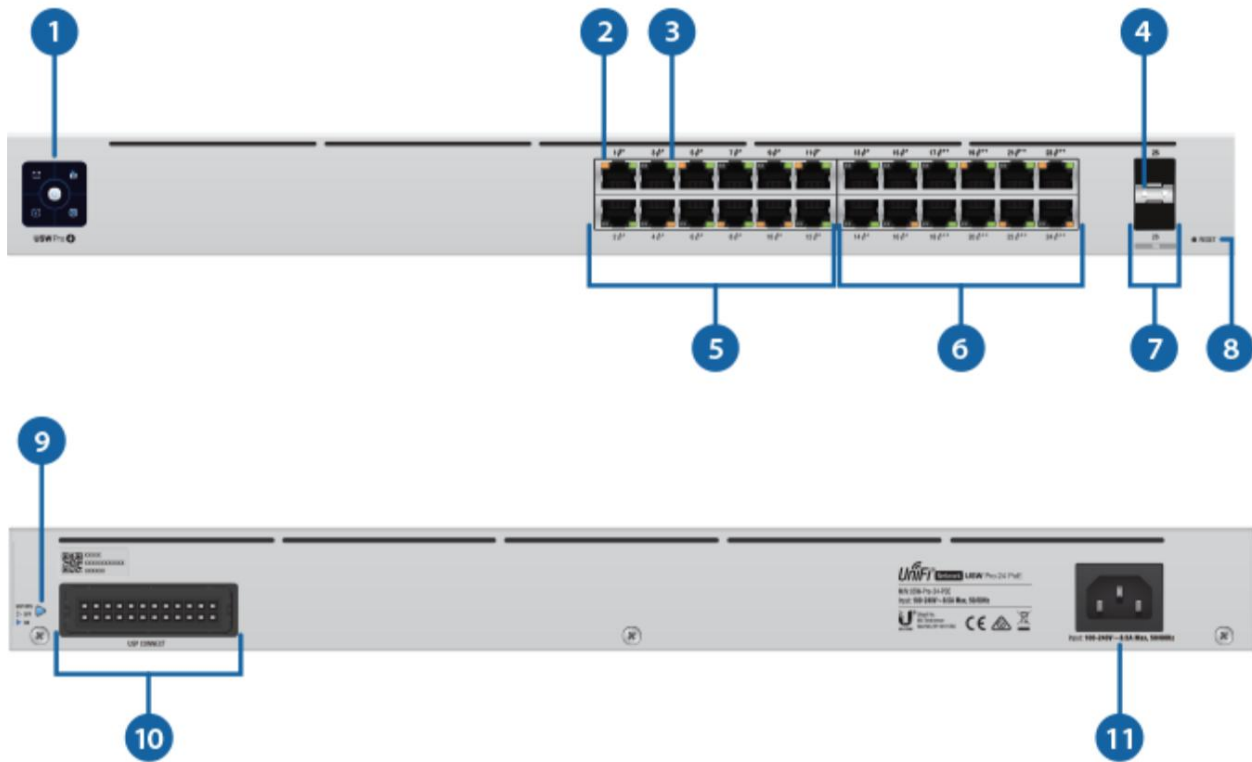
Rubber base (qty: 4)

## System Requirements

- Linux, Mac OS X or Microsoft Windows 7/8/10
- Java Runtime Environment 1.6 (1.8 or later is recommended)
- Web browser: Google Chrome (other browsers may have limited functionality).

**!** **IMPORTANT:** We strongly recommend using power regulation and supporting an uninterruptible power supply to prevent equipment damage due to local AC power stability issues.

## hardware description



<p><b>1</b> Touch screen</p>	
startup animation	Starting.
fixed white light	Factory defaults, pending approval.
steady blue light	Network approval successful and correct operation.
location animation	This indicates you have clicked Locate in the UniFi controller software.
<p><b>2</b> RJ45 PoE LEDs (ports 1 - 24)</p>	
disabled	Sin PoE

**3** Speed/Link/Activity LED (Ports 1 - 24)

disabled	not connected
Amber	Link established at 10/100 Mbps Blinking indicates activity
Green	Link established at 1000 Mbps Blinking indicates activity

**4** SFP+ Speed/Link/Activity LED (Ports 25 - 26)

disabled	not connected
Green	Link established at 1 Gbps Blinking indicates activity
White	Link established at 10 Gbps Blinking indicates activity

**5** RJ45 (ports 1 - 16)

RJ45 ports support 10/100/1000 Ethernet connections and an 802.3af/at PoE output.

**6** RJ45 (ports 17 - 24)

RJ45 ports support 10/100/1000 Ethernet connections and an 802.3af/at/bt PoE output.

**7** SFP+ (ports 25 - 26)

SFP+ ports are hot-swappable and support 1/10 Gbps connections.

**8** Reset button

This button has two functions on the UniFi switch:

- **Reset** – Quickly press and release the Reset button.
- **Restore Factory Default Settings:** Press and hold the Reset button for more than five seconds.

Reserved for future use.

**10** DC input connected to USP

Reserved for future use.

**11** power port

Connect the included power cord to the power port.

## installation requirements

- Phillips screwdriver
- Standard size, 19" rack width with a minimum 1U height For indoor applications, use
- Category 5 (or higher) UTP cabling certified for indoor use.
  
- For outdoor applications, Category 5 (or higher) shielded cabling must be used for all Ethernet connections and must be connected to the AC ground of the power supply.

We recommend that you protect your networks from harmful outdoor environments and electrostatic discharge phenomena with Ubiquiti's Industrial Grade Shielded Ethernet Cable.

For more details, visit: [ui.com/toughcable](https://ui.com/toughcable)

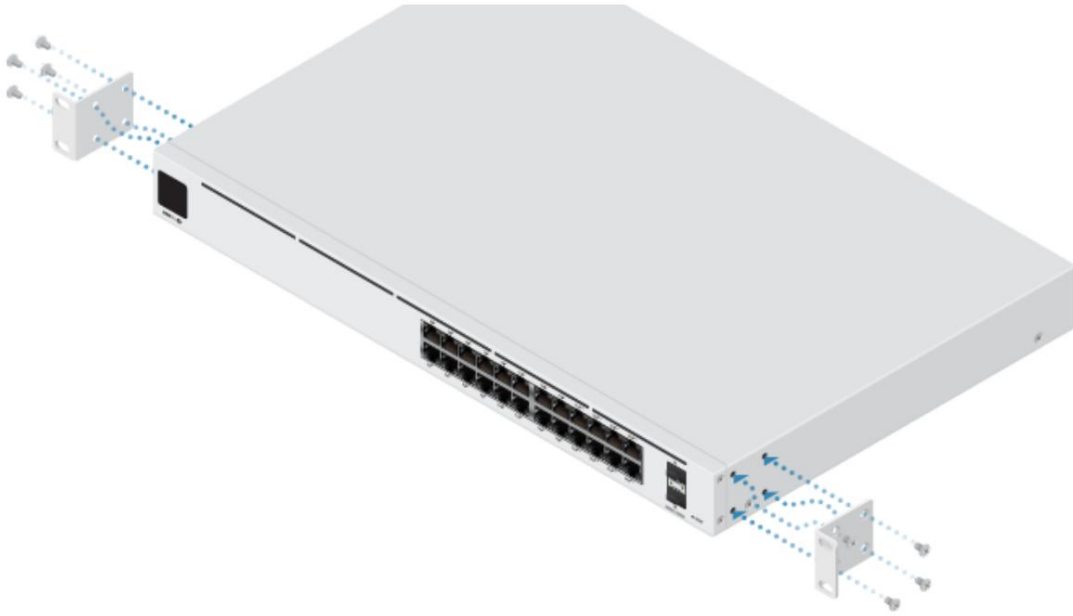


**Note:** Although the wiring can be run outside, the UniFi Switch must be stored inside a protective case.

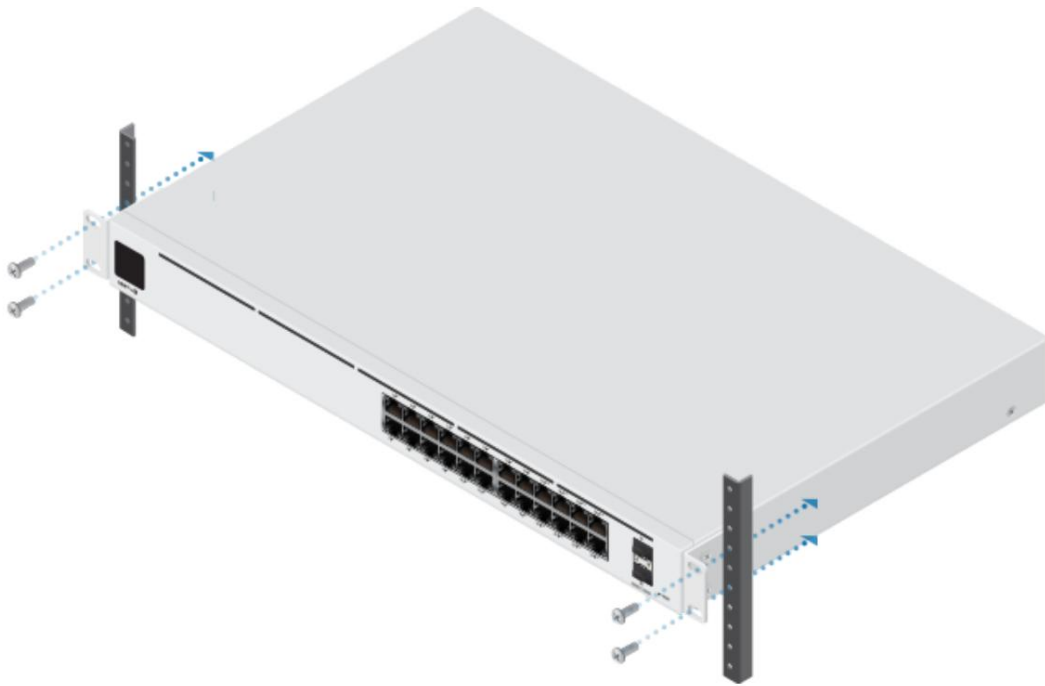
## hardware installation

1.

# USW-Pro-24-POE Quick Start Guide

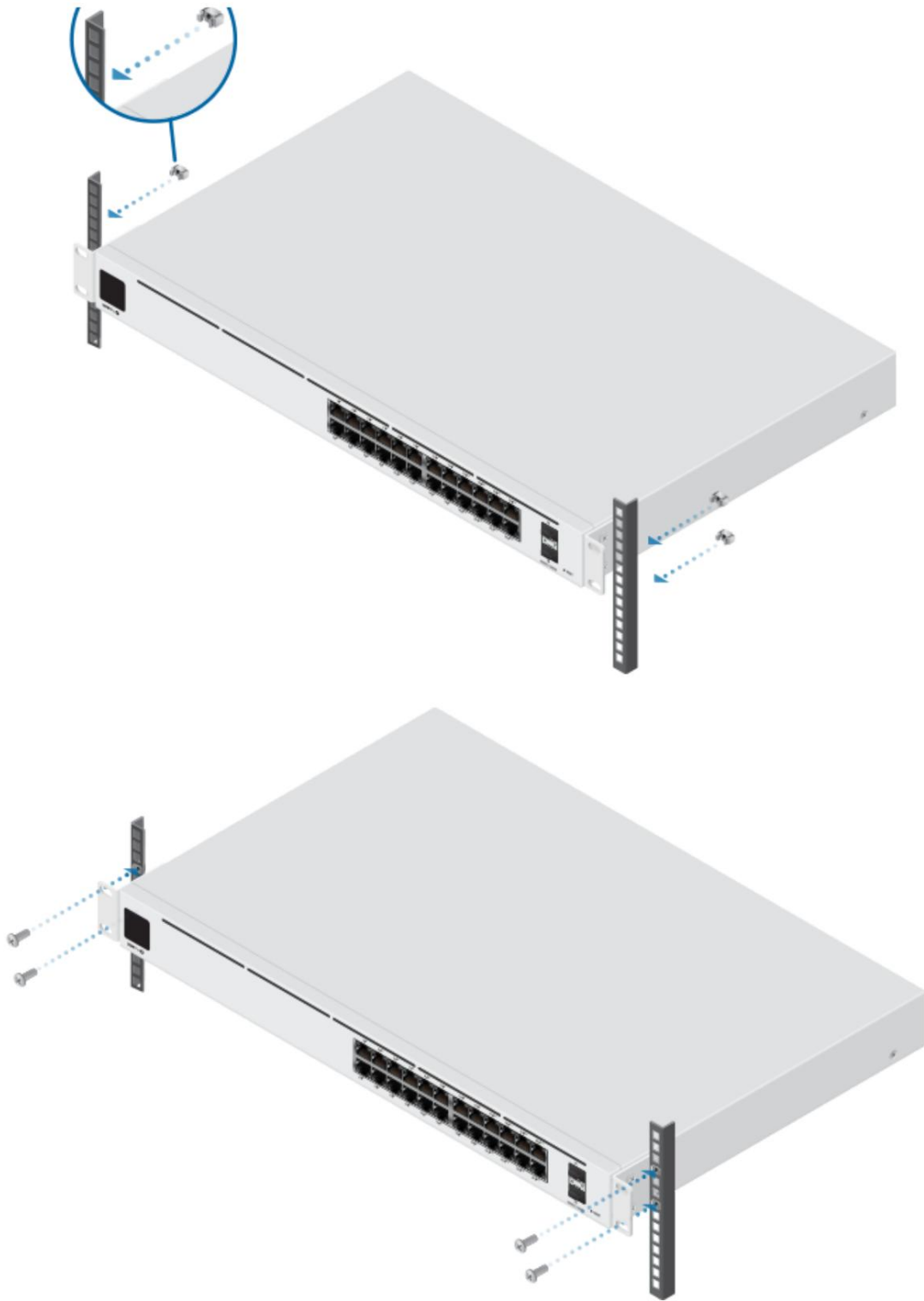


2.



THE

# USW-Pro-24-POE Quick Start Guide



## Power connection

1.

# USW-Pro-24-POE Quick Start Guide

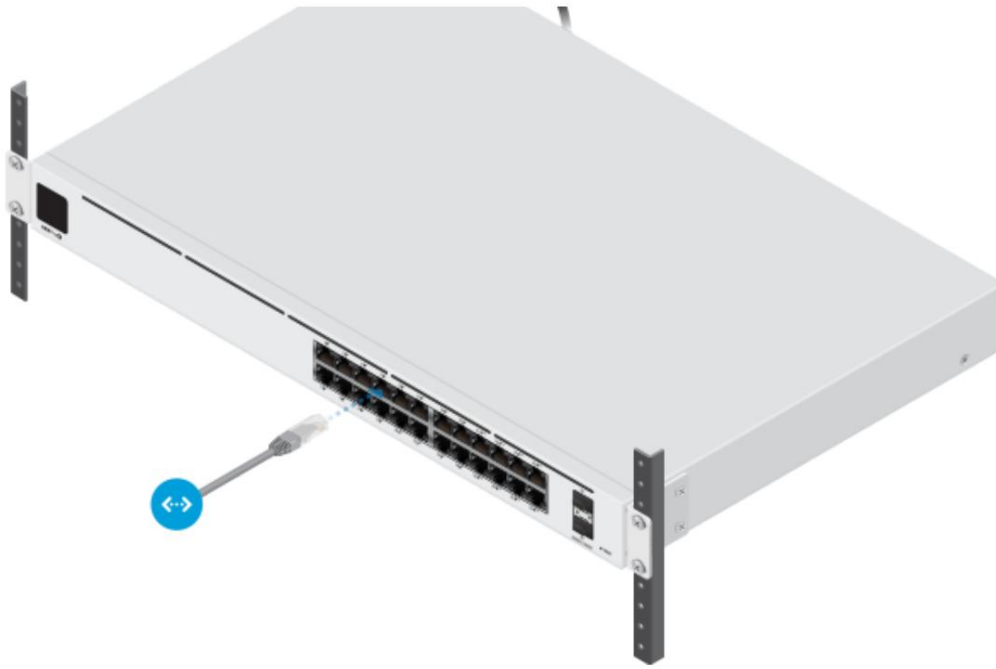


2.



ethernet connection

# USW-Pro-24-POE Quick Start Guide



## SFP connection

1.



2.





3.



For more information on compatible fiber SFP modules, visit: [ubnt.link/UniFi SFP DAC Compatibility](https://ubnt.com/UniFi_SFP_DAC_Compatibility)

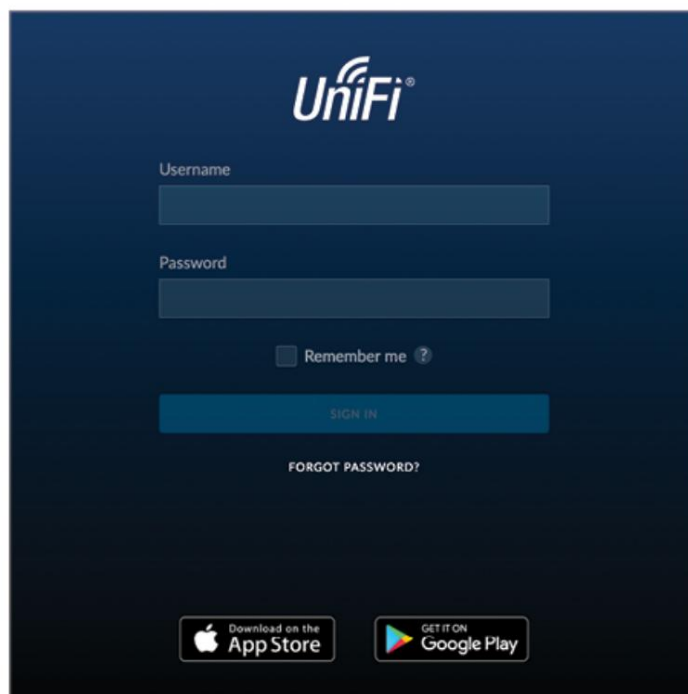
## Software installation

Download and install the latest version of the UniFi driver software at [ui.com/download/unifi](https://ui.com/download/unifi) and follow the instructions on the screen.



Note: If you already have UniFi Controller version 5.10.x or higher installed, go to the ["UniFi Switch Implementation" section](#).

Once you have installed the software and run the USW-Pro-24-POE UniFi Quick Controller management interface, install UniFi Zero, the cloud manager for the UniFi password you created and click Sign In.



You can manage your wireless network and view network statistics through the UniFi Controller's management interface.

To implement the UniFi Switch, go to "[UniFi Switch Implementation](#)".

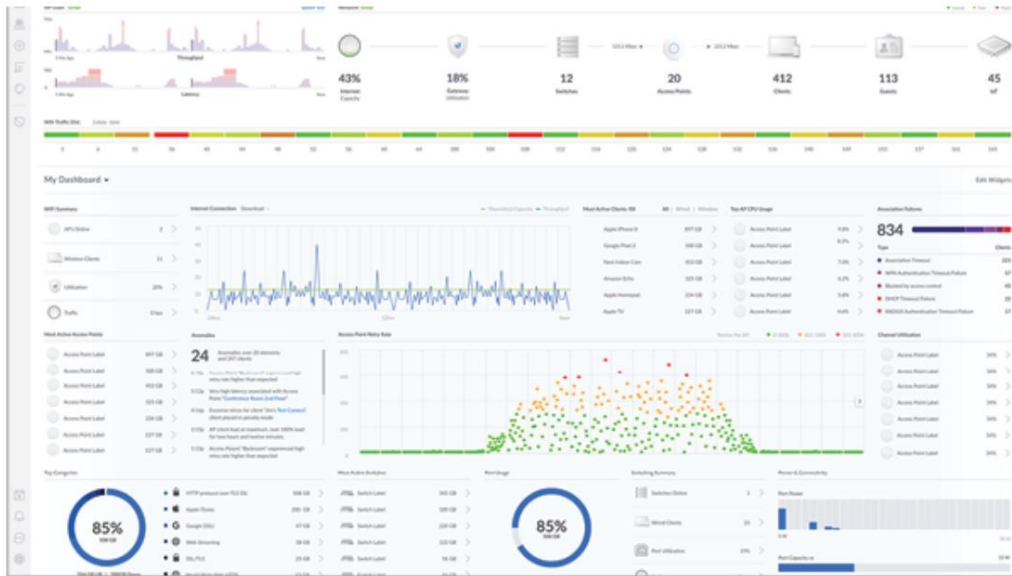
For information on setting up and using the UniFi Controller software, see the user guide located on our website: [ui.com/download/unifi](http://ui.com/download/unifi)

---

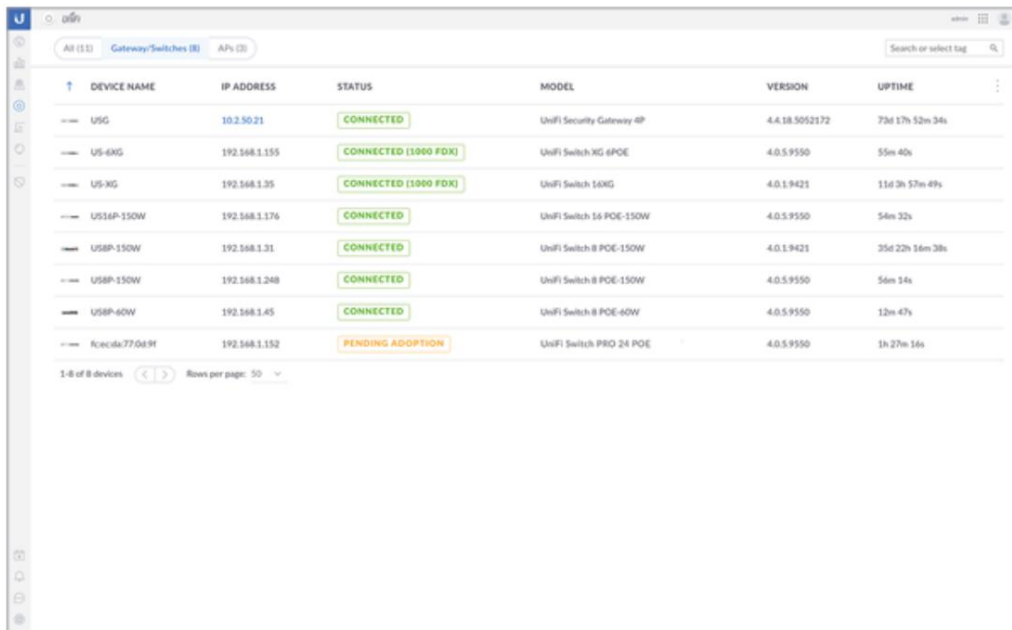
## The implementation of the UniFi switch

1. From the UniFi controller panel, click Devices in the left menu bar.

# USW-Pro-24-POE Quick Start Guide



- On the Devices screen, locate the UniFi switch in the list of devices in the Model column. To approve the UniFi switch, click Adopt.



- The System LED on the UniFi Switch will turn blue to confirm successful deployment.

## Specifications

USW-Pro-24-POE	
Dimensions	442,4 x 285,4 x 43,7 mm (17,42 x 11,24 x 1,72")

USW-Pro-24-POE  
USW-Pro-24-POE Quick Start Guide

Weight	4,30 kg (9,48 lb)
With rack mounting brackets	4,39 kg (9,68 lb)
Interfaces	
Red	(24) 10/100/1000 RJ45 ports (2) 1/10G SFP+ Ethernet ports
Management	Ethernet and bandwidth
feeding method	
universal entry	100-240V AC/50-60Hz
USP RPS DC input	52 V CC, 7,69 A; 11,5 V CC, 2,61 A
Power supply	CA/CC, interno, 450W
Supported voltage range	From 100 to 240 V AC
Max power consumption (Does not include PoE output)	50W
Luces LED	
System	state
RJ45 data port	PoE; speed/link/activity
SFP+ data port	Link/Activity
ESD/EMP protection	Air: ±16 kV, contact: ±12 kV
Shocks and vibrations	ETSI300-019-1/4 standard
Operating temperature	-5 to 40° C (23° F to 104° F)
operating humidity	10 to 90% non-condensing
Certifications	CE, FCC, IC

sound level*	
25% PoE load, 25°C ambient temperature	0,9 dBr
50% PoE load, 25°C ambient temperature	7,3 dBr
100% PoE load, 40°C	18,8 dBr

**\* Background noise level: 27.5 dBa**

PoE	
Interfaces the PoE	
Ports 1-16	PoE+ IEEE 802.3af/at (tomas: 1, 2+; 3, 6-)
Ports 17-24	PoE++ IEEE 802.3bt 60W (Par A 1, 2+; 3, 6-) (Par B 4, 5+; 7, 8-)

Wattage per Port per PSE 802.3at	
802.3bt	32W 64W
802.3af voltage range mode	44-57 V
802.3at/bt voltage range mode	50-57 V

## safety instructions

1. Read, follow and save these instructions.
2. Pay attention to all warnings.
3. Only use the devices or accessories indicated by the manufacturer.



**WARNING:** Lack of adequate ventilation may result in a fire hazard.  
Keep at least 20mm clearance next to the ventilation holes for proper ventilation.



**WARNING:** To reduce the risk of fire or electric shock, do not expose the product to rain or moisture.



**WARNING:** Do not use this product in a place where it can be submerged in water.



**WARNING:** Avoid using this product during a lightning storm. There is a remote possibility of an electrical discharge caused by lightning.

## electrical safety information

1. It is mandatory to comply with the current, frequency and voltage requirements indicated on the manufacturer's label. Connection to a power source other than those specified may result in malfunction, equipment damage, or fire hazard if limitations are not followed.
2. This equipment contains no operator-serviceable parts. Only a qualified service technician should provide services.
3. This equipment is supplied with a detachable power cord that has an integral safety ground wire designed to be connected to a safety ground.
  - a. Do not substitute the power cord with one other than the approved type provided.

Never use an adapter plug to connect to a two-wire outlet, as it will break the continuity of the ground wire.

- b. The equipment requires the use of the ground wire as part of the safety certification. Modification or misuse can create a shock hazard, which could cause serious injury or death.

- c. If you have any questions about the installation, contact a qualified electrician [USW-Pro-24-POE Quick Start Guide](#) or the manufacturer before connecting the equipment.
- d. The indicated AC adapter provides a safety ground. For installation in a building, adequate short-circuit back-up protection must be provided.

and. A protective connection must be installed in accordance with national wiring rules and regulations.

4. The product is used in the service access area.

## limited warranty

[ui.com/support/warranty](http://ui.com/support/warranty)

The limited warranty requires arbitration to resolve disputes on a case-by-case basis and, where appropriate, specifying arbitration instead of jury trials or class actions.

## Compliance

### FCC

Changes or modifications not expressly approved by the party responsible for compliance could void the user's authority to operate the equipment.

This device complies with Part 15 of the FCC Rules. Operation is subject to the following two conditions.

1. This device may not cause harmful interference, and 2. This device must accept any interference, including interference that may cause undesired operation.

This equipment has been tested and found to comply with the limits for a Class A digital device, pursuant to Part 15 of the FCC Rules. These limits are designed to protect the equipment, to the extent possible, from harmful interference when it is operated in a commercial environment. This equipment generates, uses, and can radiate radio frequency energy and, if not installed and used in accordance with the instruction manual, may cause harmful interference to radio communications. Operation of this equipment in a residential area is likely to cause harmful interference in which case the user will be required to correct the interference at his own expense.

### ISED from Canada

CAN ICES-3(A)/NMB-3(A)

### Australia and New Zealand



Warning: This equipment complies with Class A of CISPR 32. In a residential environment, it may cause radio interference.

### CE marked

The CE marking on this product indicates that the product complies with all applicable USW-Pro-24-POE Quick Start Guide directives.



## WEEE Compliance Statement

## Declaration of conformity

## online resources



© 2020 Ubiquiti Inc. All rights reserved.